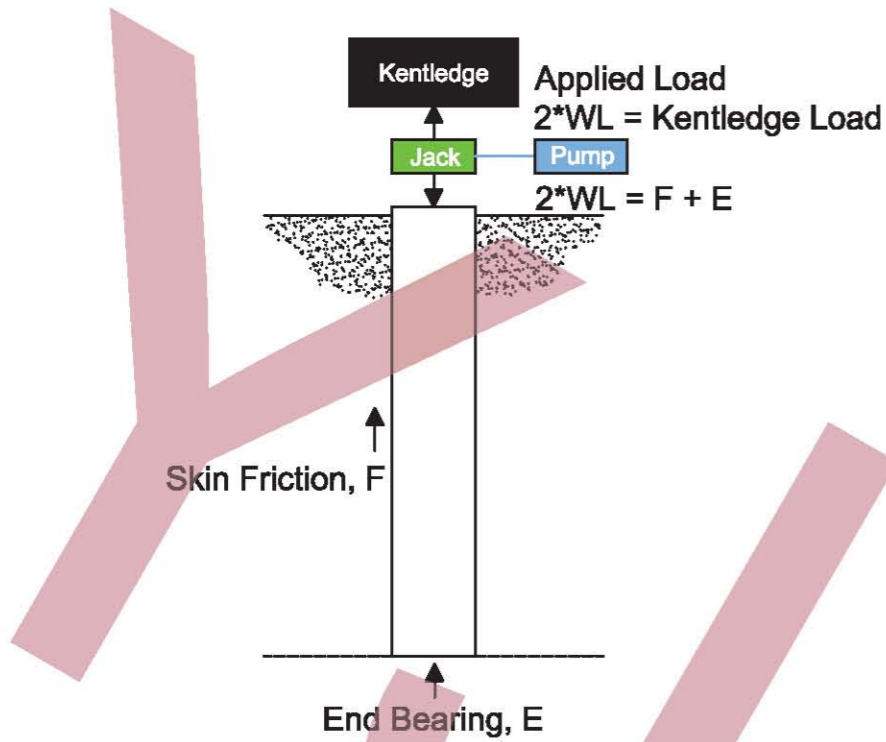
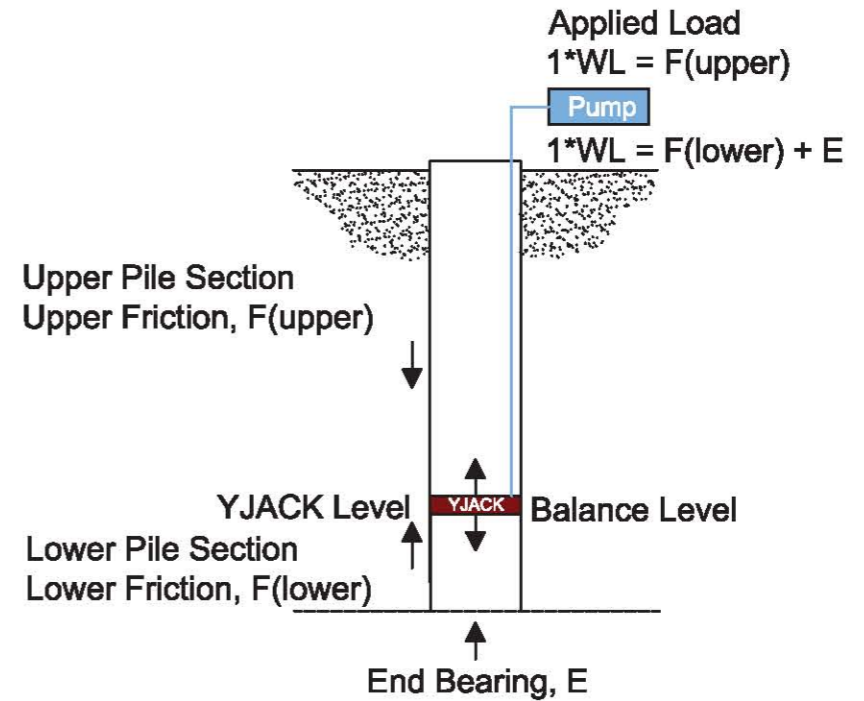


# YJACK THEORY FOR STATIC LOAD TEST REACTION SYSTEM

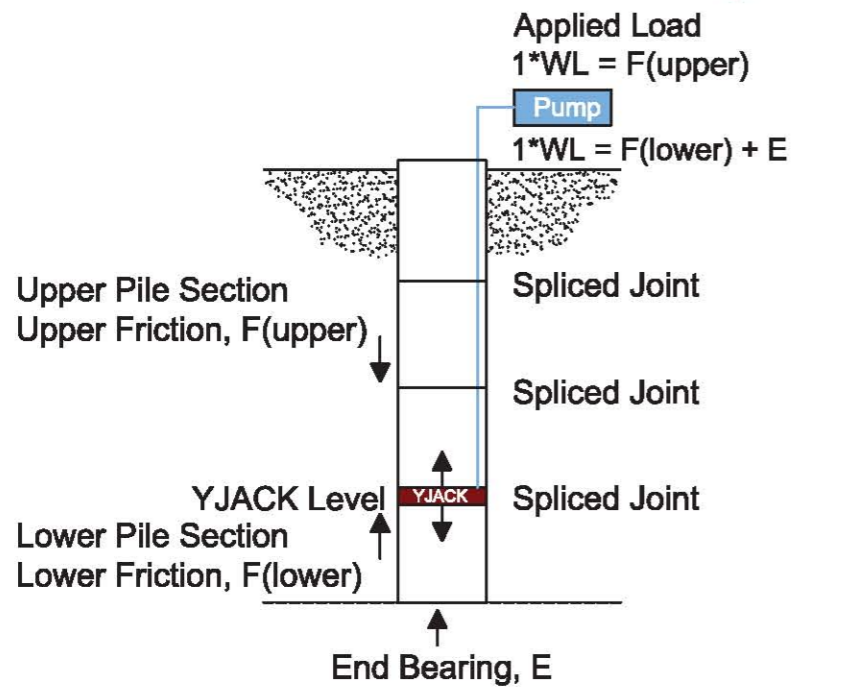


(a) KENTLEDGE Method on All Piles



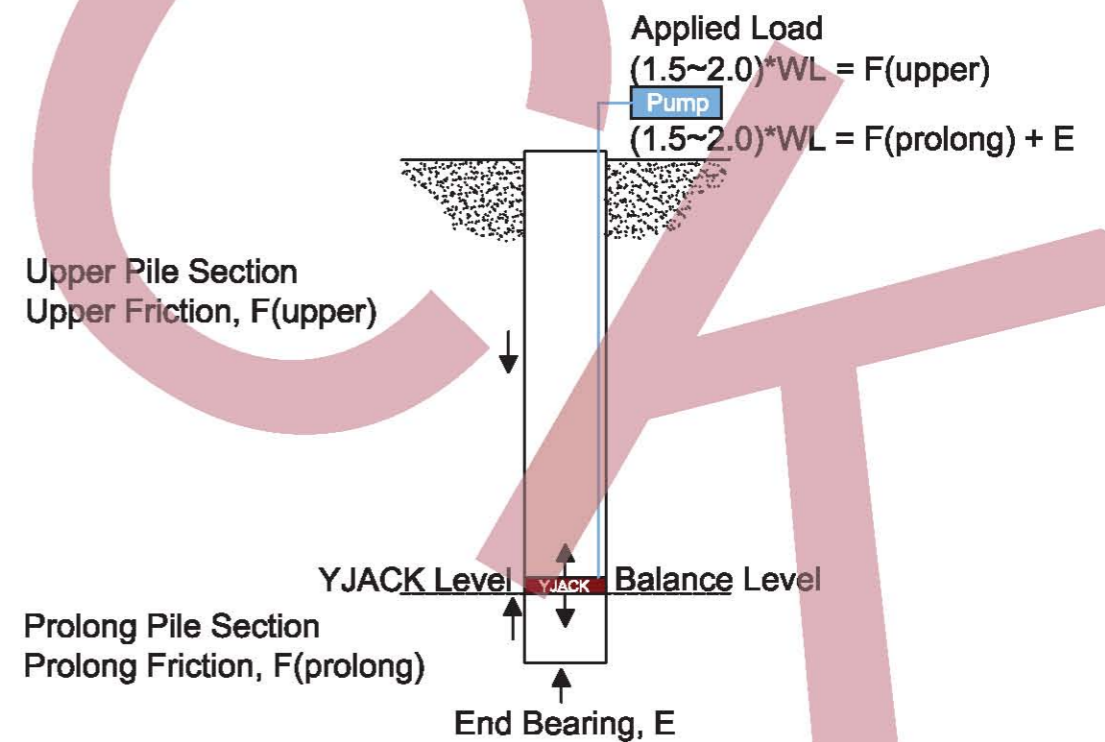
Balance Level Equation:  $F(\text{upper}) = F(\text{lower}) + E(\text{base})$

(b) YJACK Type B on Bored Piles



Balance Level Equation:  $F(\text{upper}) \approx F(\text{lower}) + E(\text{base})$

(c) YJACK Type C on Concrete Piles



Balance Level Equation:  $F(\text{upper}) = F(\text{prolong}) + E(\text{base})$

(d) YJACK Type W on Working Piles